



US 20070093895A1

(19) **United States**(12) **Patent Application Publication****Donnelly et al.**(10) **Pub. No.: US 2007/0093895 A1**(43) **Pub. Date: Apr. 26, 2007**

(54) **METHOD OF PERFORMING ANTERIOR CRUCIATE LIGAMENT RECONSTRUCTION USING BIODEGRADABLE INTERFERENCE SCREW**

Related U.S. Application Data

(63) Continuation of application No. 10/673,737, filed on Sep. 29, 2003.

(76) Inventors: **Lisa Donnelly**, Wayland, MA (US); **Yufu Li**, Bridgewater, NJ (US); **Joan M. Sullivan**, Hanover, MA (US); **Gregory Whittaker**, Stoneham, MA (US); **J. Jenny Yuan**, Neshanic Station, NJ (US)

Publication Classification

(51) **Int. Cl.**
A61F 2/08 (2006.01)
(52) **U.S. Cl.** **623/13.14**

Correspondence Address:

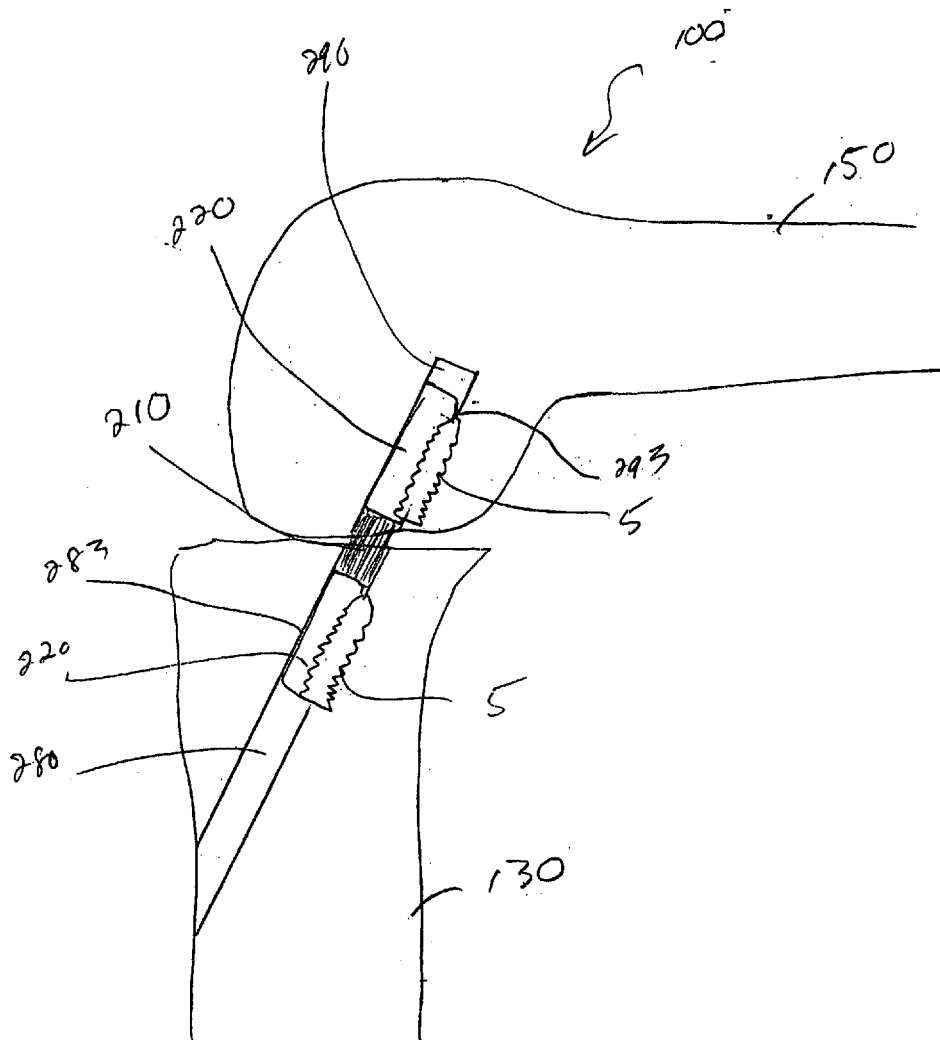
PHILIP S. JOHNSON
JOHNSON & JOHNSON
ONE JOHNSON & JOHNSON PLAZA
NEW BRUNSWICK, NJ 08933-7003 (US)

(57) **ABSTRACT**

A method of replacing an ACL with a graft. The method provides for the drilling bone tunnels in a femur and a tibia. A replacement graft is provided having first and second ends. A biodegradable composite screw is provided. The screw is made from a biodegradable polymer and a bio-ceramic or a bioglass. At least one end of the graft is secured in a bone tunnel using the biodegradable composite screw.

(21) Appl. No.: **11/604,427**

(22) Filed: **Nov. 27, 2006**



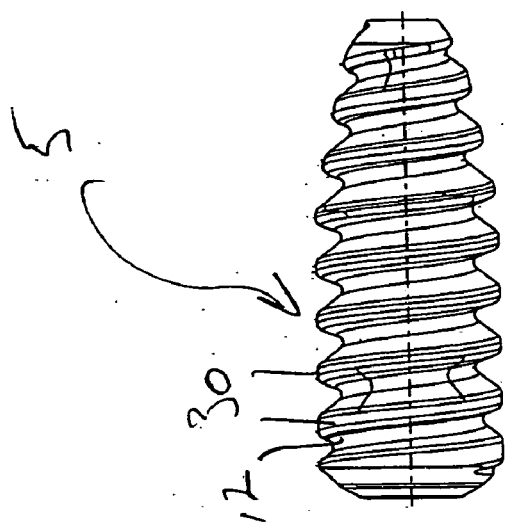


FIG. 1A

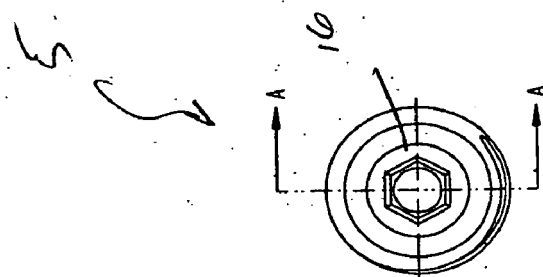


FIG. 1B

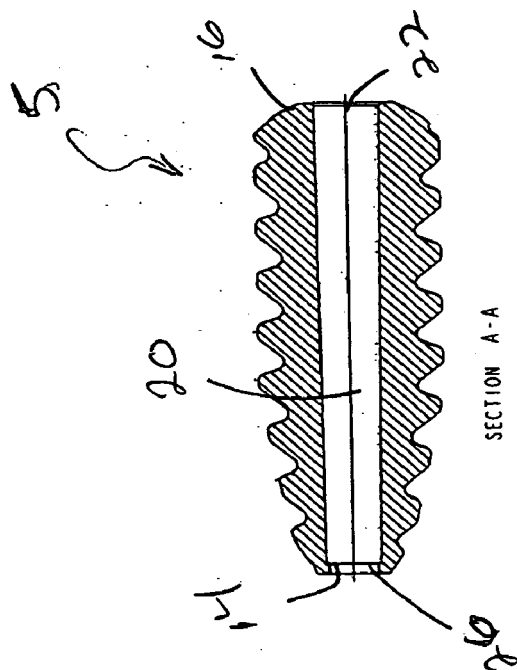
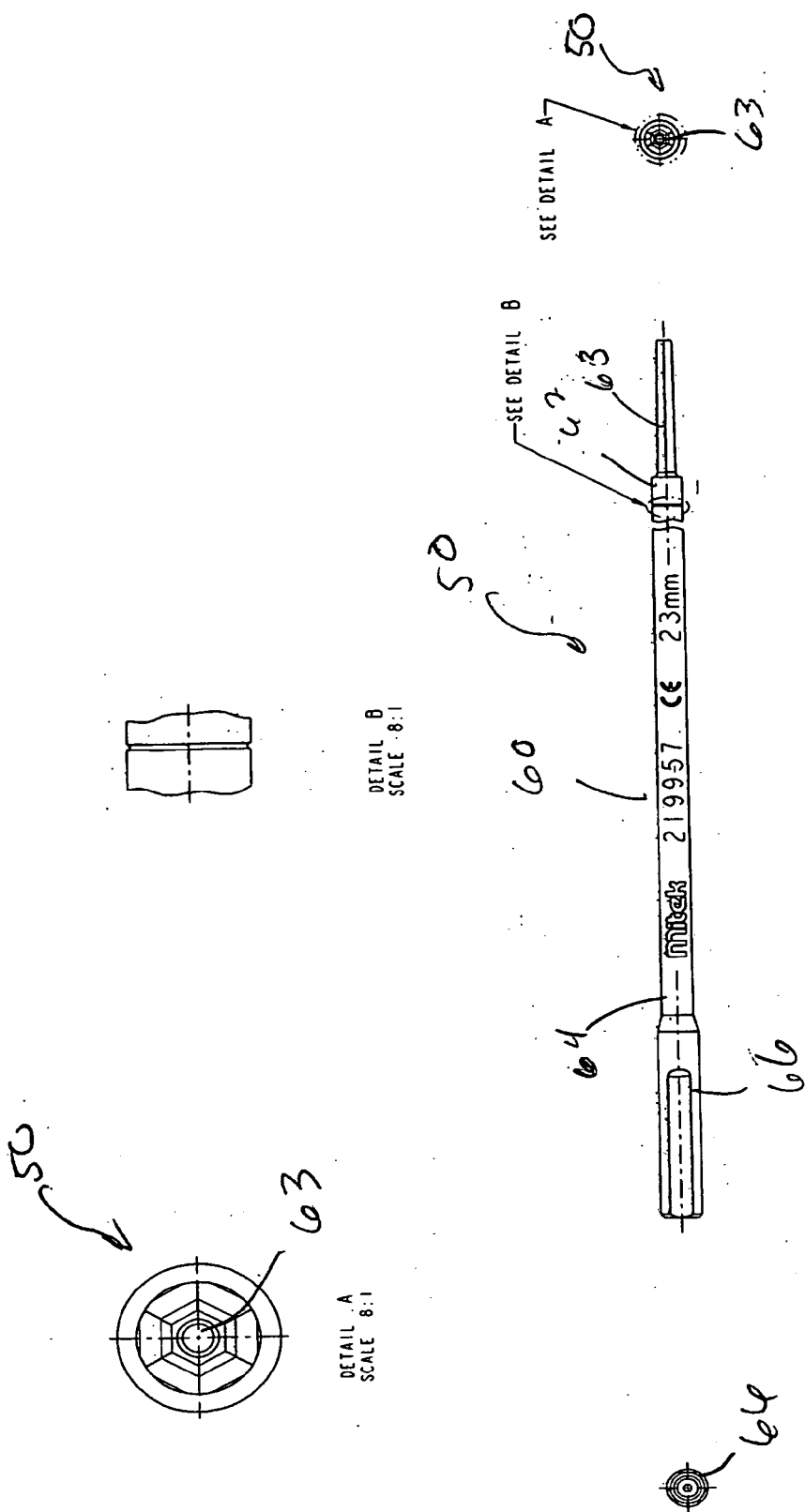
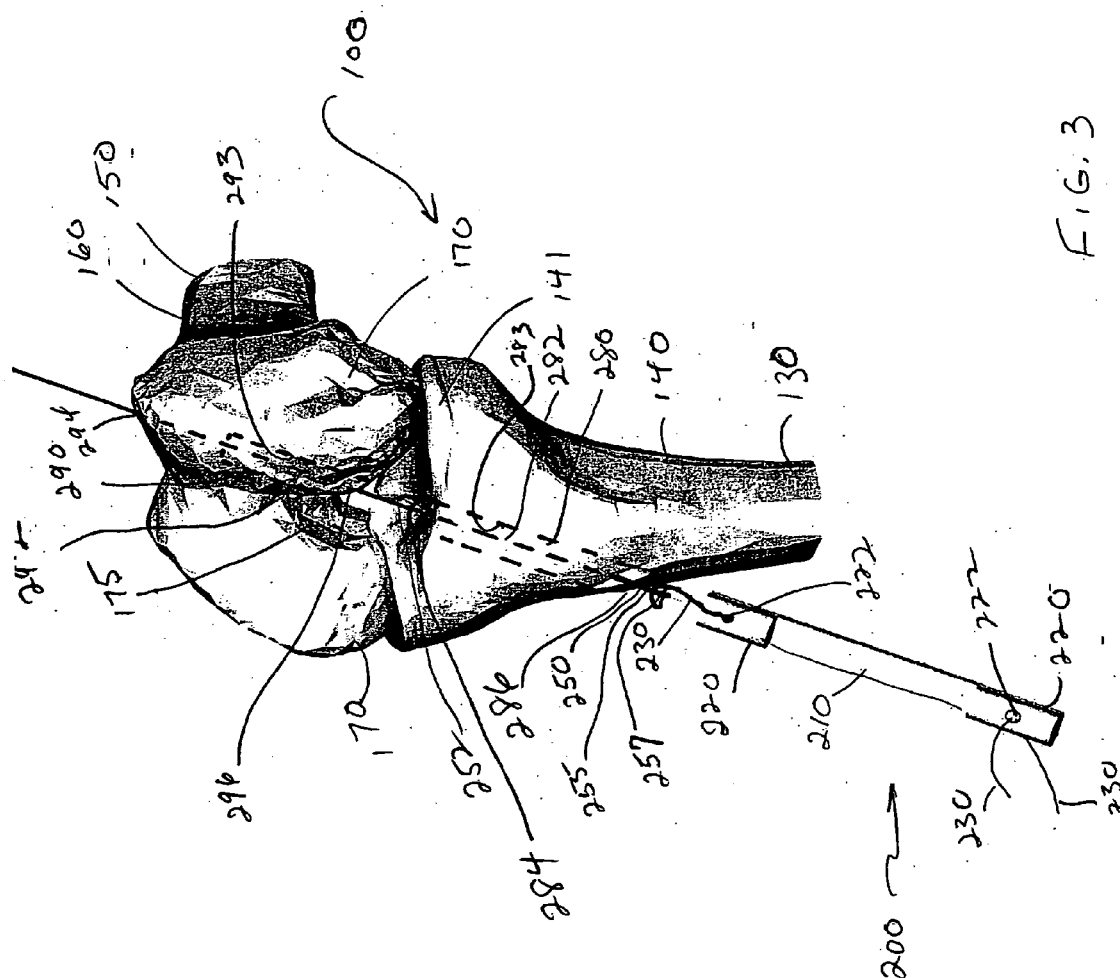


FIG. 1C





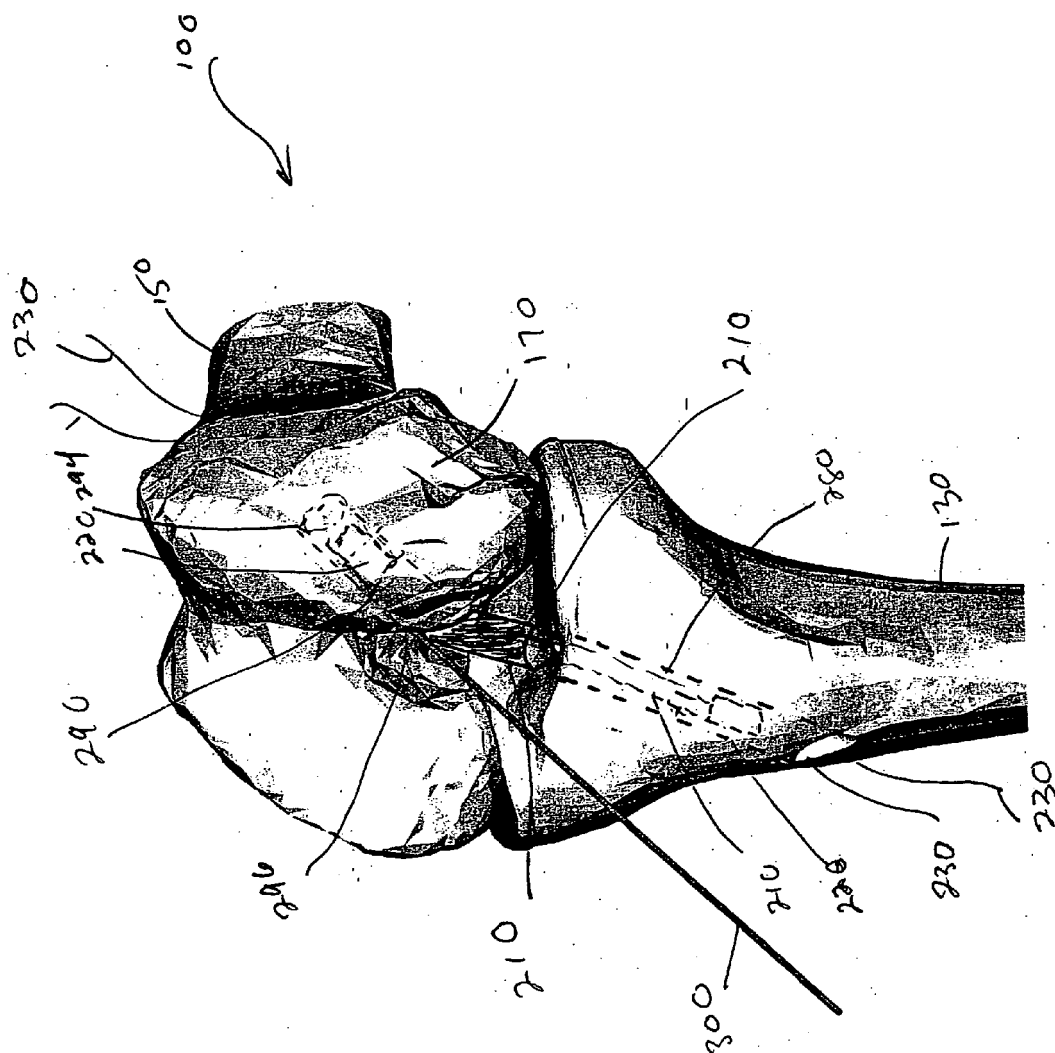


FIG. 4

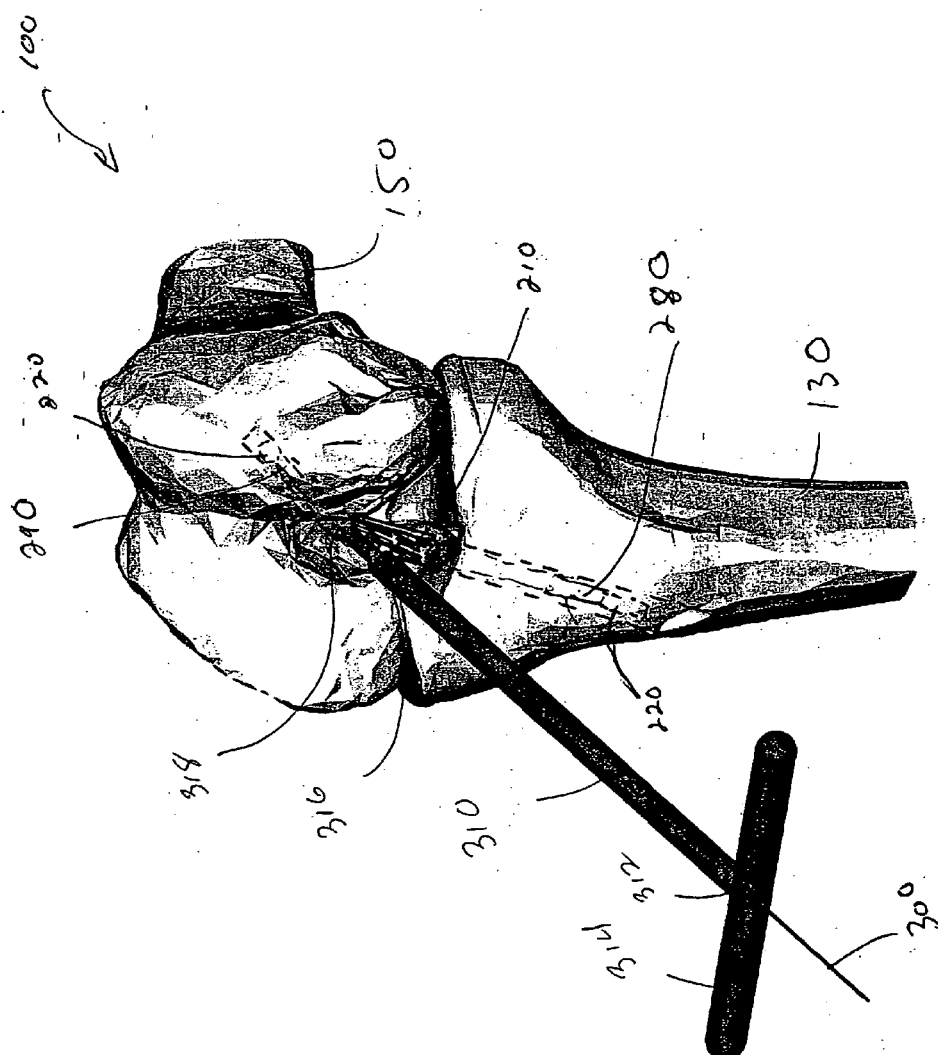
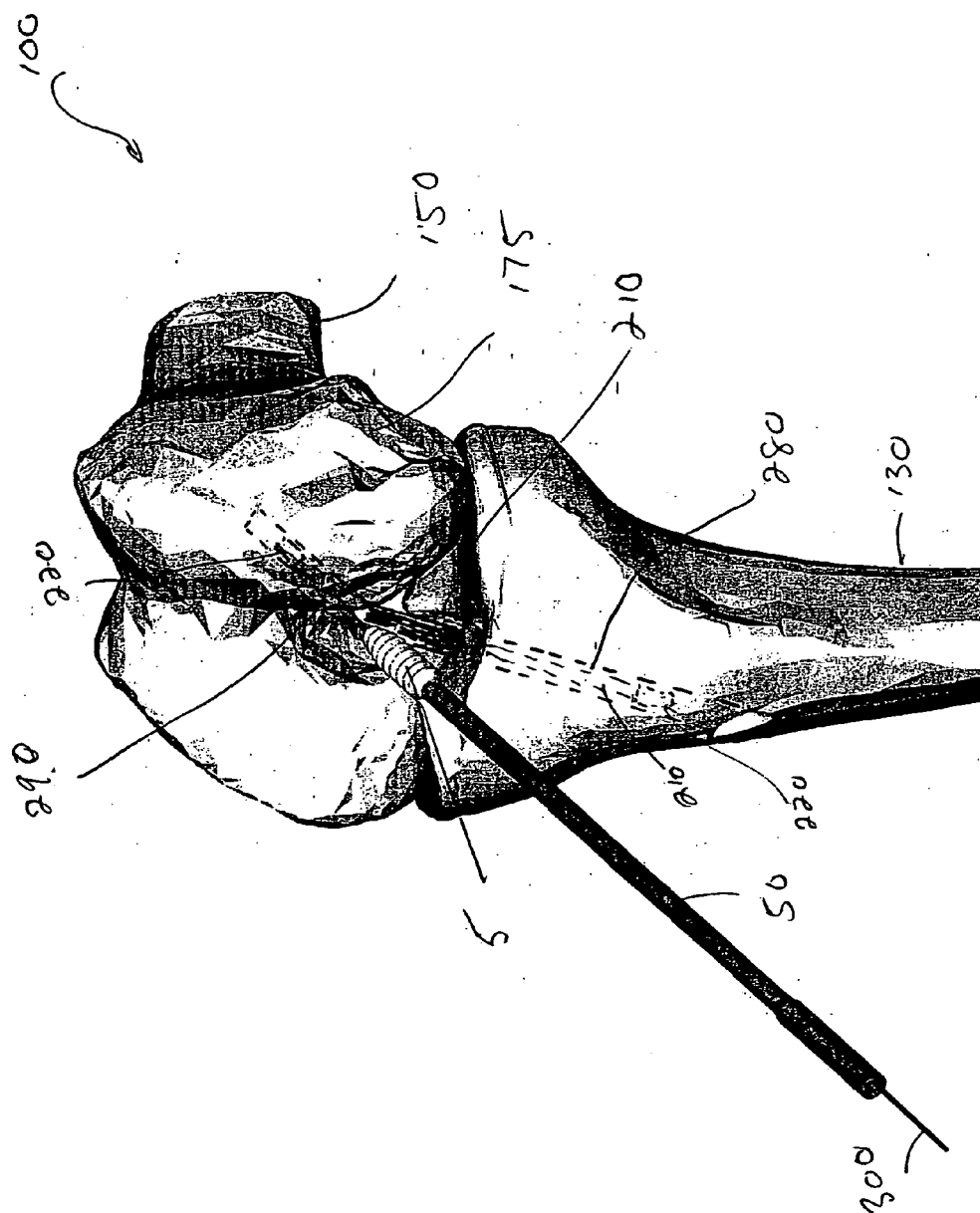


Fig. 5



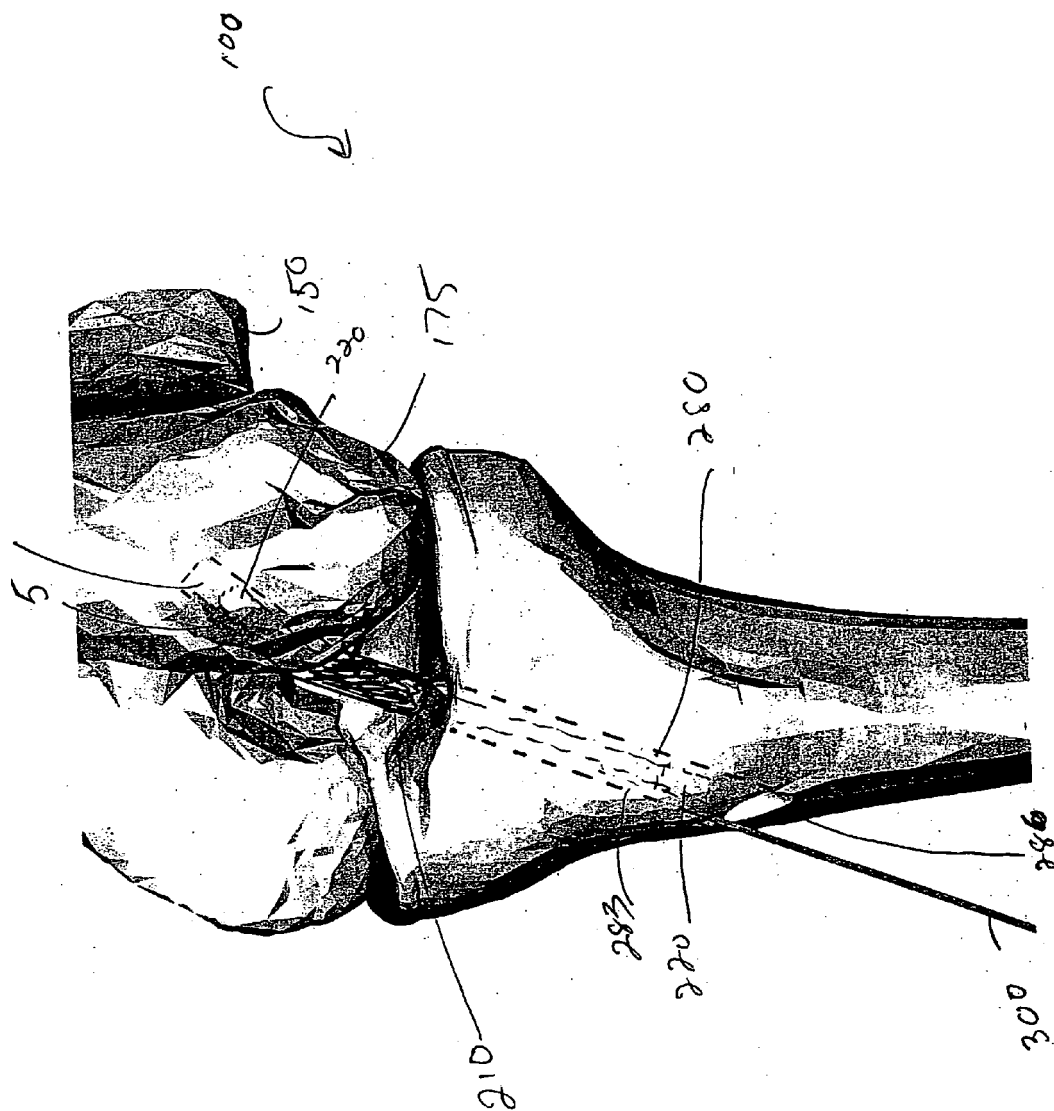
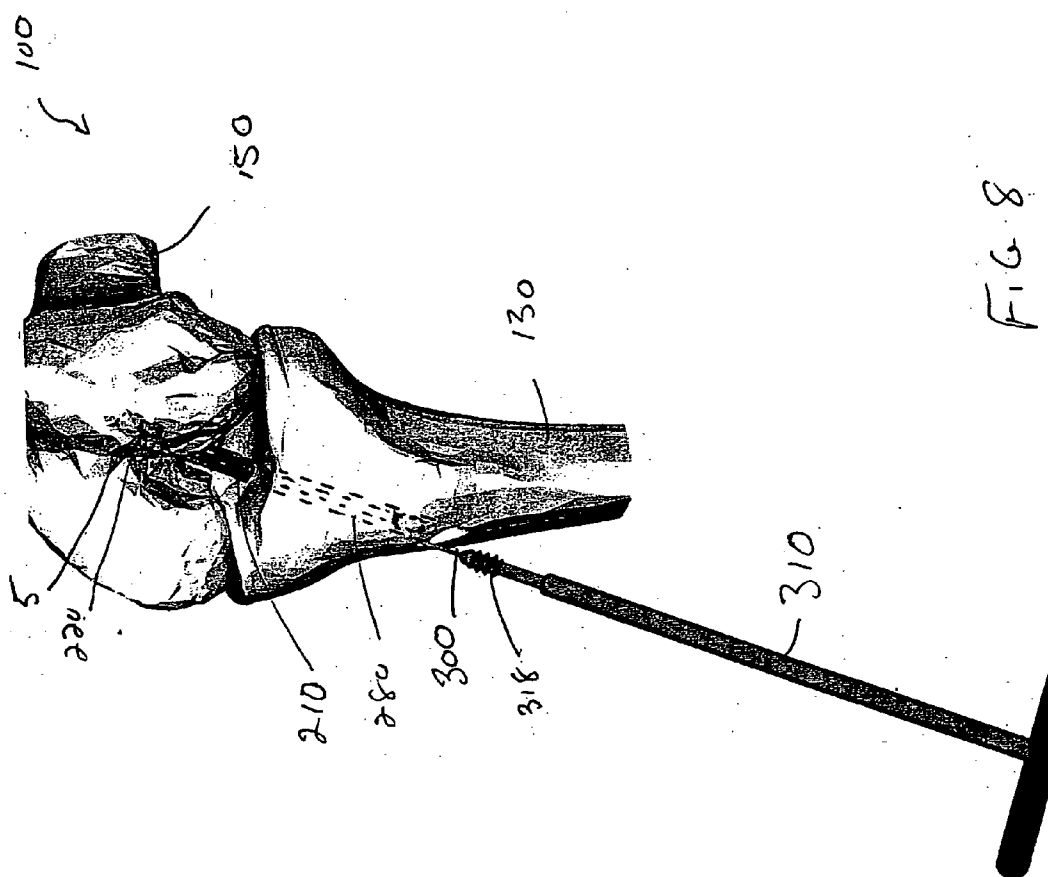
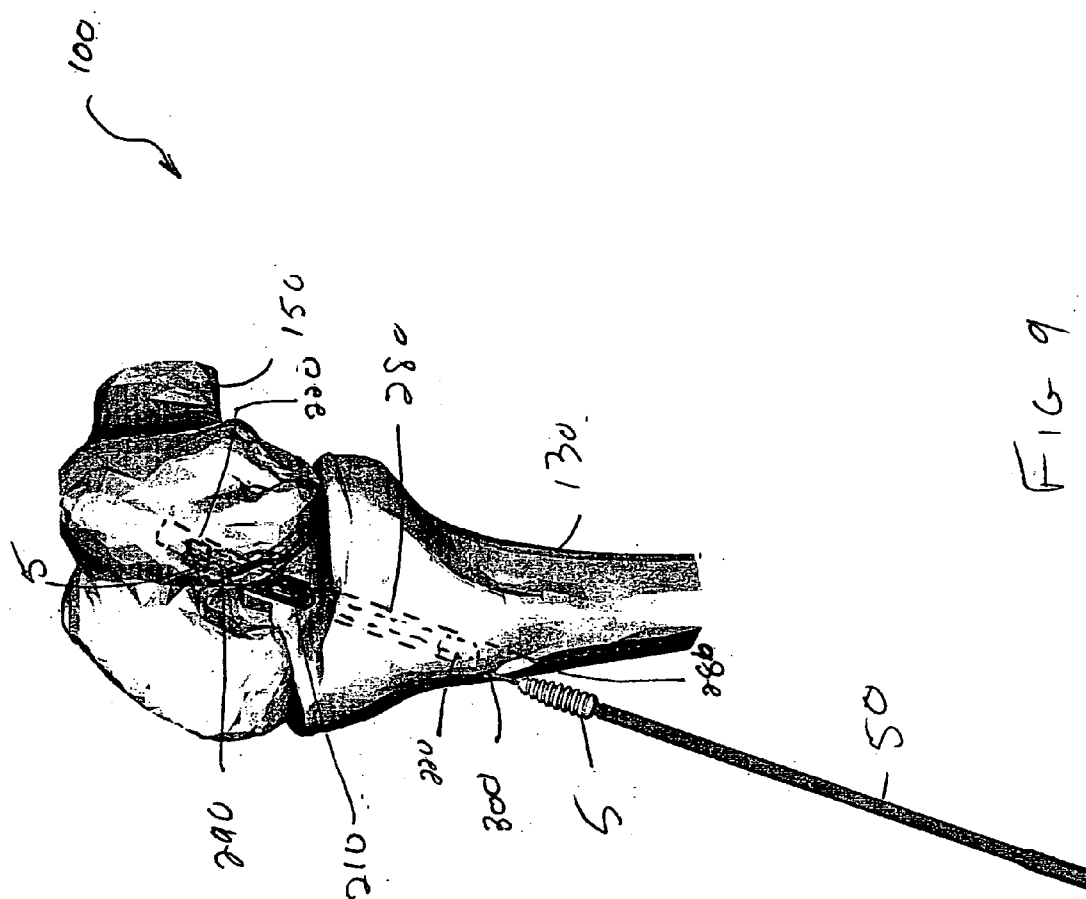


FIG. 7





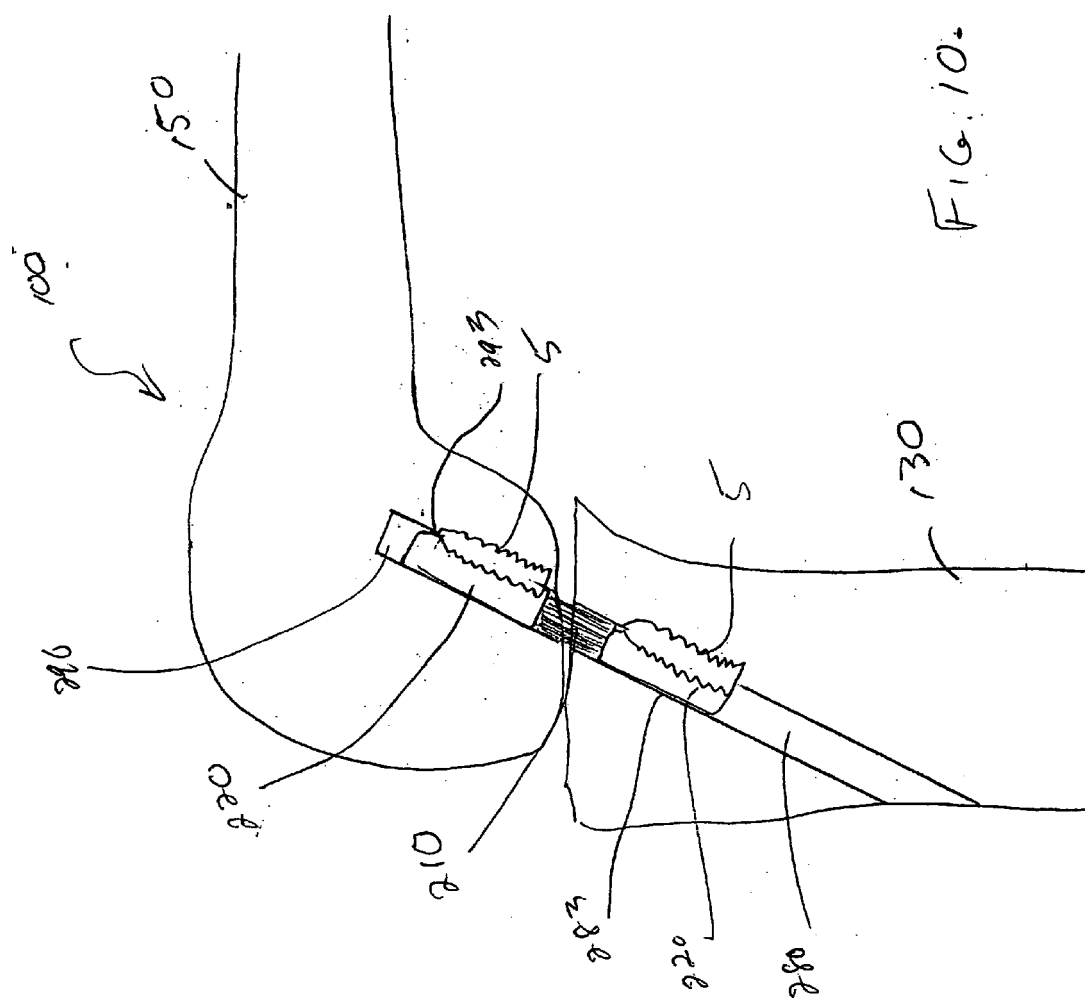




FIG. 11A

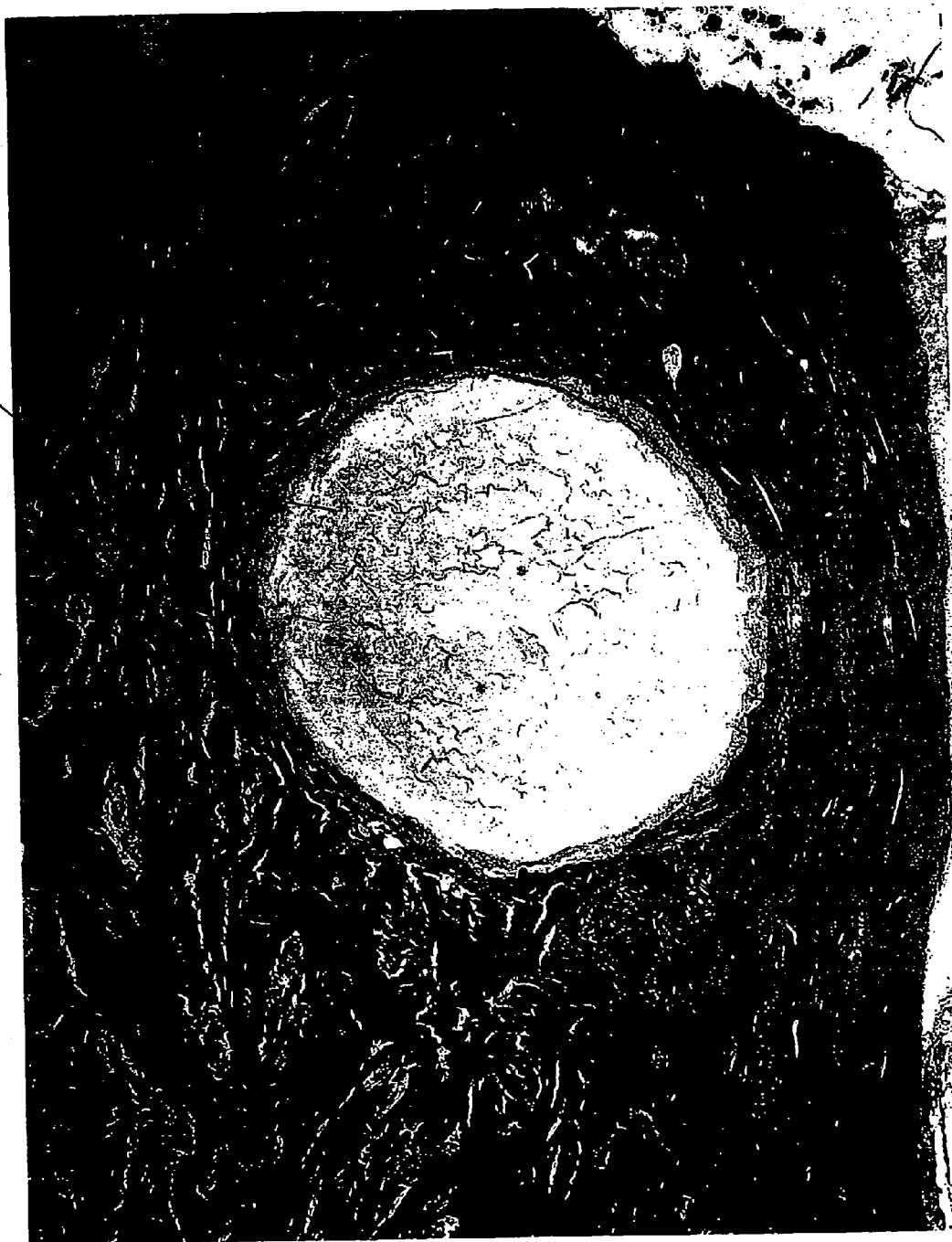
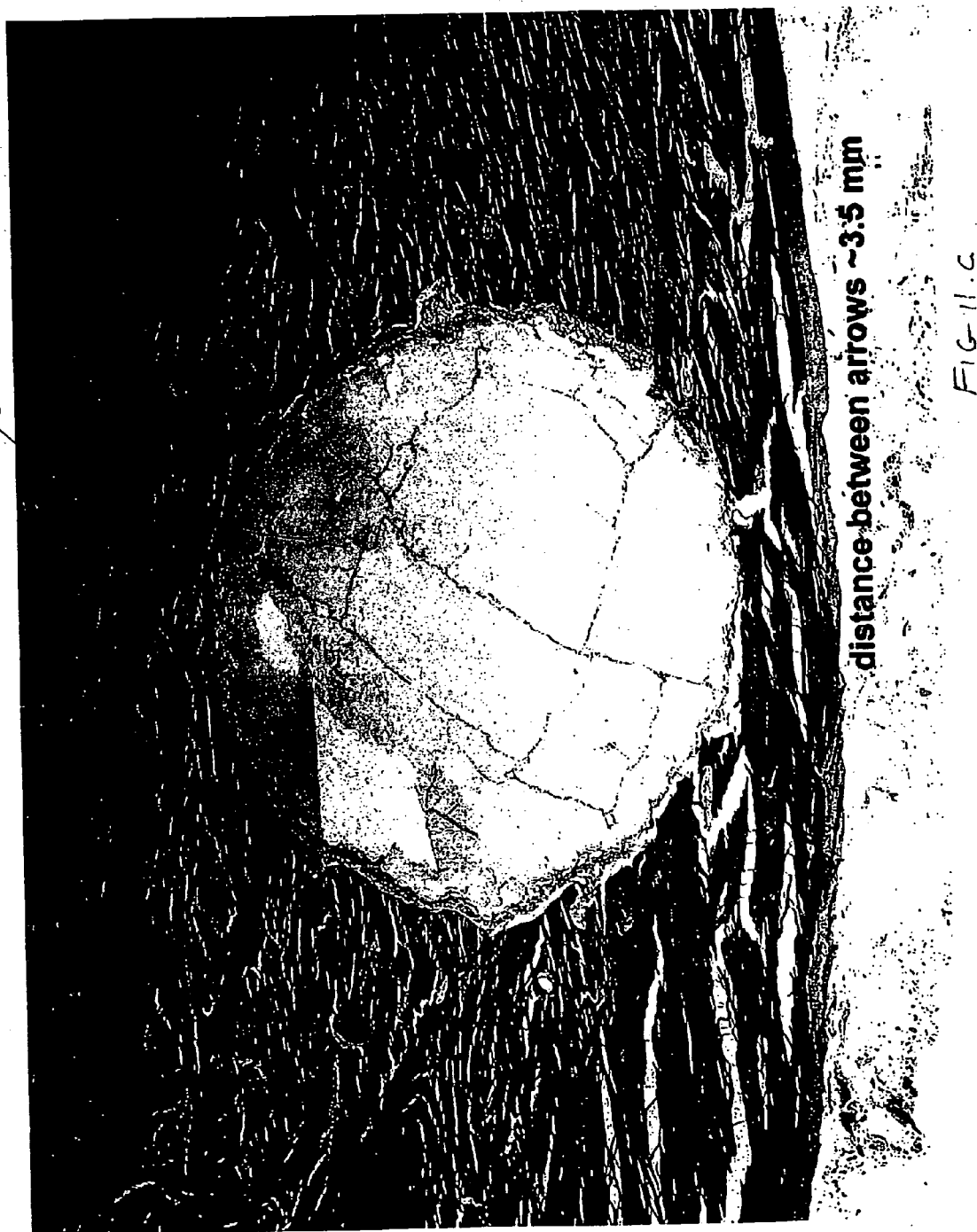


FIG. 11B



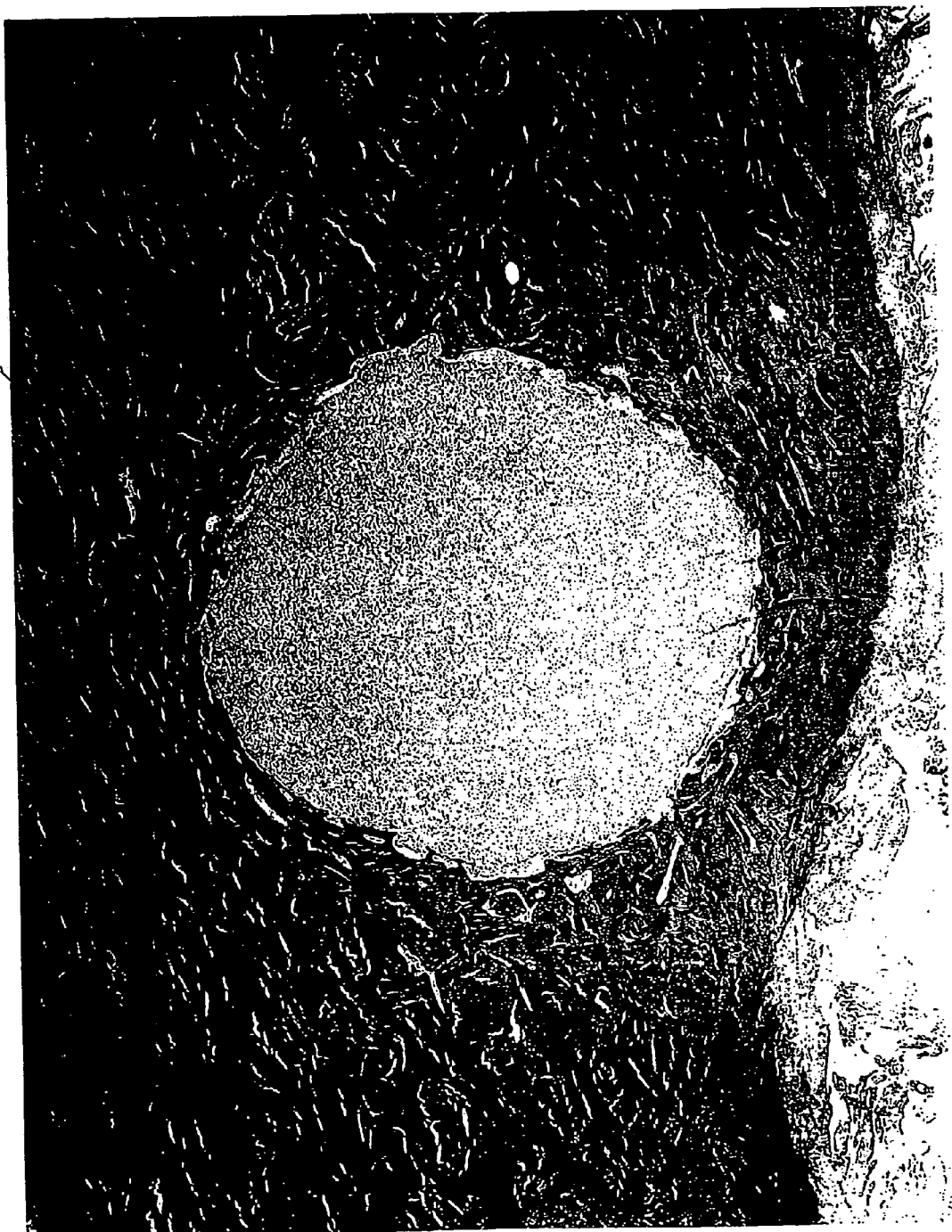


FIG. 11D

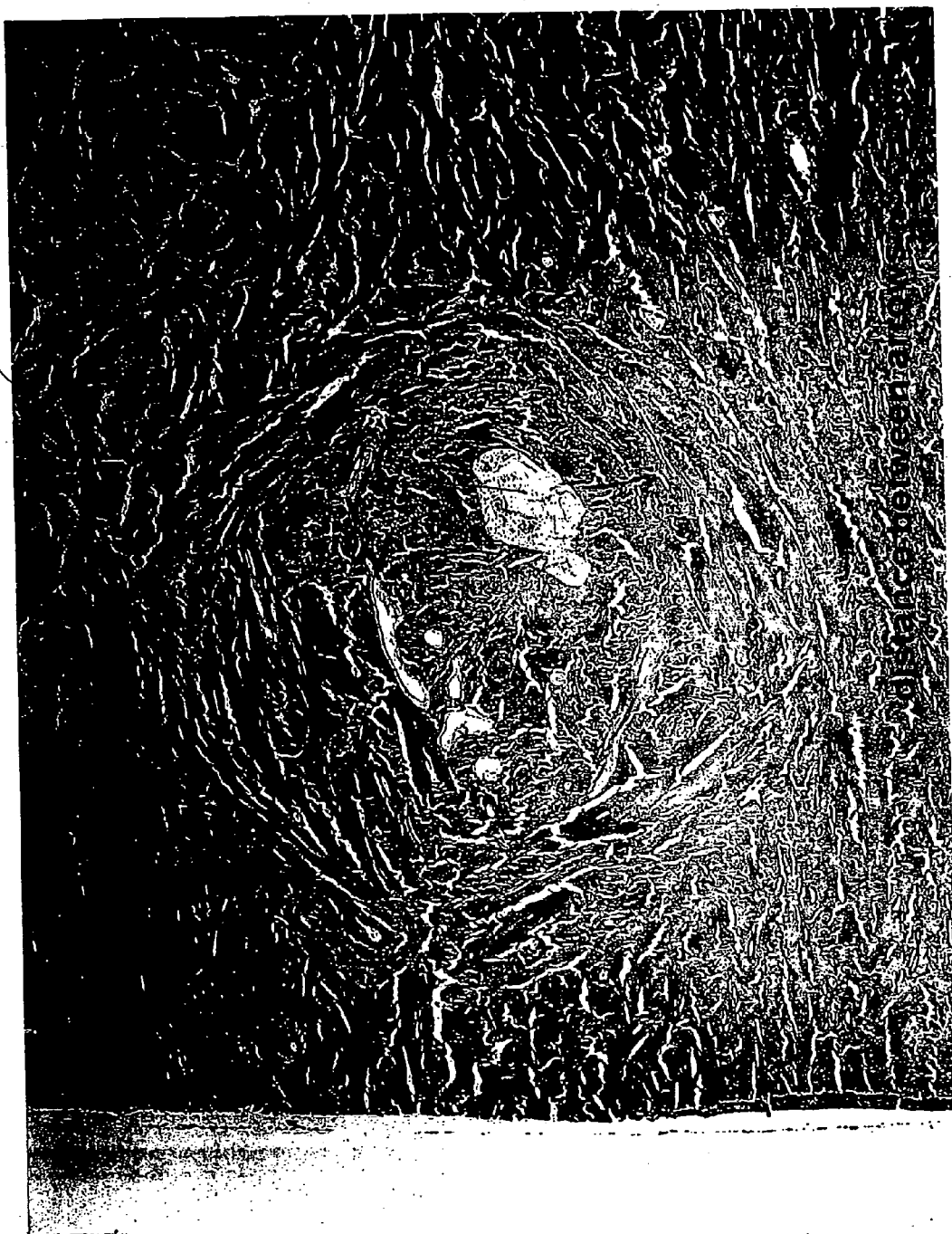


FIG. 11E

**METHOD OF PERFORMING ANTERIOR
CRUCIATE LIGAMENT RECONSTRUCTION
USING BIODEGRADABLE INTERFERENCE
SCREW**

TECHNICAL FIELD

[0001] The field of art to which this invention relates is surgical procedures for the repair of an anterior cruciate ligament, more specifically, a surgical procedure for affixing an anterior cruciate ligament graft into a bone using a biodegradable interference screw.

BACKGROUND OF THE INVENTION

[0002] The knee joint is one of the strongest joints in the body because of the powerful ligaments that bind the femur and tibia together. Although the structure of the knee provides one of the strongest joints of the body, the knee may be one of the most frequently injured joints, e.g., athletes frequently stress and tear knee ligaments. The large number of ligament injuries has given rise to considerable innovative surgical procedures and devices for replacing and reconstructing torn or dislocated ligaments, typically involving grafting autografts, allografts, or a synthetic construct, to the site of a torn or dislocated ligament. For example, the replacement of an anterior cruciate ligament (ACL) may involve transplanting a portion of the patellar tendon, looped together portions of semitendinosus-gracilis (hamstring) tendons, or donor Achilles tendons, to attachment sites in the region of the knee joint.

[0003] Tears or ruptures of an anterior cruciate ligament of a knee (ACL) typically require a major surgical intervention wherein a replacement graft is mounted to the ends of the bones surrounding the knee in order to reconstruct the knee. A ruptured or damaged ACL typically results in serious symptoms such as knee instability resulting in diminished ability to perform high level or recreational sports, or in some cases daily activities relating to motility. Although the use of knee braces may alleviate some of these symptoms, the potential long term effects of a damaged ACL include meniscal damage and articular cartilage damage.

[0004] The basic steps in a conventional ACL reconstruction procedure include: harvesting a graft made from a portion of the patellar tendon with attached bone blocks; preparing the graft attachment site (e.g., drilling holes in opposing bones of the joint in which the graft will be placed); placing the graft in the graft attachment site; and rigidly fixing the bone blocks in place within the graft site, i.e., the holes or "bone tunnels". The screws used to fix the graft in place are called "interference screws" because they are wedged between the bone block and the wall of the bone tunnel into which the bone block fits. Typically, there is very little space between the bone block and the inner wall of the bone tunnel in the bone at the fixation site.

[0005] Several types of surgical procedures have been developed to replace the ACL. Although repair would be a preferred procedure, it is not typically possible since the end of the torn ACL is typically not of sufficient length to reattach successfully. However, reconstructions can be made to a damaged ACL.

[0006] There are several types of conventional replacement grafts that may be used in these replacement proce-

dures. In all procedures tibial and femoral tunnels are drilled by the surgeon using conventional techniques. Known, conventional drill guides and drills are used. In one type of procedure known as a bone-tendon-bone procedure, an autograft tendon is harvested from the patellar tendon along with an attached bone block on one end harvested from the patella and a harvested bone block on the other end harvested from the tibia. In order to secure the graft in the knee, one end is mounted into the tibial tunnel and other end is mounted into the femoral tunnel. This is done by mounting the opposed bone blocks in the tibial and femoral tunnels, respectively, in the following manner. A guide pin is passed through the tibial tunnel, into the femoral tunnel and out through the lateral femoral cortex. Suture is used to attach the graft to the proximal end of the guide pin. The distal end of the guide pin is then pulled out of the lateral cortex of the femur and the graft is pulled into the knee (femoral and tibial tunnels). Once the bone blocks are emplaced in the respective tibial and femoral tunnels, the blocks are secured in place in the following manner. One method of securing or fixing the ends of the graft in the tunnels is to use a conventional metallic interference screw. The screw is inserted into the opening of a tunnel and placed in between the graft and the interior surface of the bone tunnel. It is then turned and screwed into the tunnels, thereby forcing the end of the graft against an interior surface of the bone tunnel. The ends of graft are secured and maintained in place in the tunnel by means of a force fit provided by the interference screw.

[0007] Another surgical procedure for the replacement of an anterior cruciate ligament involves providing a graft ligament without attached bone blocks. The graft can be an autograft or an allograft. The autografts that are used may typically be harvested from the hamstring tendons or the quadriceps tendons. The allografts that are conventionally used are harvested from cadaveric sources, and may include the hamstring tendons, quadriceps tendons, Achilles tendon, and tibialis tendons. If desired, and if readily available, it may possible to use synthetic grafts or xenografts. Tibial and femoral tunnels are similarly drilled in the tibia and femur respectively using conventional techniques, drill guides and drills. Once the tunnels have been drilled, the surgeon then pulls the graft through the tibial and femoral tunnels using conventional techniques such that one end of the graft resides in the tibial tunnel and the other end of the graft resides in the femoral tunnel. For example, one conventional technique for pulling a graft through the tunnels is to attach the graft to the proximal end of a guide pin using conventional surgical suture. The guide pin is then passed through the tibial tunnel, into the femoral tunnel, and out through the femoral cortex. The distal end of the guide pin is then pulled out of the lateral cortex of the femur and the graft is pulled into the knee (femoral and tibial tunnels). After the surgeon has emplaced and positioned the ends of the graft in the respective tunnels, the graft ends need to be secured and fixed in place to complete the replacement procedure. One method of securing or fixing the ends of the graft in the tunnels is to use a conventional metallic interference screw. The screw is inserted into the opening of a tunnel and placed in between the graft and the interior surface of the bone tunnel. It is then turned and screwed into the tunnels, thereby forcing the end of the graft against an interior surface of the

bone tunnel. The ends of the graft are secured and maintained in place in the tunnel by means of a force fit provided by the bone screw.

[0008] Interference screws for anchoring ligaments to bone are typically fabricated from medically approved metallic materials that are not naturally degraded by the body. One potential disadvantage of such screws is that once healing is complete, the screw remains in the bone. An additional disadvantage of a metal screw is that in the event of a subsequent rupture or tear of the graft, it may be necessary to remove the metal screw from the bone site. Metallic screws may include a threaded shank joined to an enlarged head having a transverse slot or hexagonal socket formed therein to engage, respectively, a similarly configured, single blade or hexagonal rotatable driver for turning the screw into the bone. The enlarged heads on such screws can protrude from the bone tunnel and can cause chronic irritation and inflammation of surrounding body tissue.

[0009] Permanent metallic medical screws in movable joints can, in certain instances, cause abrading of ligaments during normal motion of the joint. Screws occasionally back out after insertion, protruding into surrounding tissue and causing discomfort. Furthermore, permanent metallic screws and fixation devices may shield the bone from beneficial stresses after healing. It has been shown that moderate periodic stress on bone tissue, such as the stress produced by exercise, helps to prevent decalcification of the bone. Under some conditions, the stress shielding which results from the long term use of metal bone fixation devices can lead to osteoporosis.

[0010] Biodegradable interference screws have been proposed to avoid the necessity of surgical removal after healing. Because the degradation of a biodegradable screw occurs over a period of time, support load is transferred gradually to the bone as it heals. This reduces potential stress shielding effects.

[0011] In order to overcome the disadvantages that may be associated with metal interference screws, interference screws made from biodegradable polymers are known in this art. For example, it is known to use an interference screw made from polylactic acid. Ideally, the biodegradable interference screw will rapidly absorb or break down and be replaced by bone. However, it is known that screws made from polylactic acid tend to maintain their structural integrity for very long periods of time thereby preventing the desired bone in growth. Attempts have been made to improve the bone regeneration process by using other biodegradable polymers and copolymers of lactic acid that resorb or absorb more quickly. The problem often associated with these quicker absorbing polymers or copolymers is that the bone regeneration may proceed at a much slower rate than the rate of resorption, resulting in premature mechanical failure of the screw and a resulting pull out of the graft end from the femoral tunnel. Some of the absorbable interference screws of the prior art may take several years to absorb, and may result in a fibrous tissue mass or cyst being left behind, not bone. This lack of bone in-growth may create fixation problems if the ACL is torn again, necessitating a new graft replacement. In addition, if the screw absorbs too slowly, the screw will need to be removed in the event of a subsequent failure of the graft.

[0012] Accordingly, what is needed in this art is a novel method of performing an ACL replacement graft procedure

using a novel interference screw made from a biodegradable material which rapidly absorbs or degrades and promotes bone in-growth.

SUMMARY OF THE INVENTION

[0013] Therefore, it is an object of the present invention to provide a novel method of replacing a ruptured or injured anterior cruciate ligament with a graft using a novel biodegradable interference screw consisting of a composite of a biodegradable polymer and a biodegradable ceramic or bioglass.

[0014] Accordingly, a novel method of repairing an anterior cruciate ligament in the knee is disclosed. A replacement graft is provided having a first end and a second end. A bone tunnel is drilled in the tibia. A bone tunnel is also drilled in the femur. The first end of the graft is mounted in the femoral bone tunnel. The second end of the graft is mounted in the tibial bone tunnel. A biodegradable, composite interference screw is provided. The interference screw is made from a copolymer of poly (lactic acid) and poly(glycolic acid) and a bioceramic. The biodegradable screw is inserted into the femoral bone tunnel between an interior surface of the femoral bone tunnel and the first end of the graft. The interference screw is rotated such that the screw is substantially contained within the femoral bone tunnel, and the first end of the graft is fixed in place between the interference screw and a section of the interior surface of the femoral bone tunnel.

[0015] These and other features, aspects and advantages of the present invention will become more apparent from the following description and accompanying drawings.

BRIEF DESCRIPTION OF THE DRAWINGS

[0016] FIG. 1A is a side view of a biodegradable interference bone screw useful in the method of the present invention.

[0017] FIG. 1B is an end view of the interference bone screw of FIG. 1A.

[0018] FIG. 1C is a cross-sectional view of the interference bone screw of FIG. 1B taken along view line A-A.

[0019] FIG. 2 is a side view of a driver device useful for emplacing the bone screw of FIG. 1 in a bone tunnel.

[0020] FIG. 3 illustrates a bone-tendon-bone graft prior to emplacement in a knee for an ACL reconstruction.

[0021] FIG. 4 shows a guide wire placed into the femoral tunnel between the tunnel wall and the bone block.

[0022] FIG. 5 illustrates a conventional tap being used to tap a hole between the wall and the bone block.

[0023] FIG. 6 shows a biodegradable interference screw being inserted into the femoral tunnel between the tunnel wall and the bone block.

[0024] FIG. 7 illustrates a guide wire placed into the tibial tunnel between the tunnel wall and the bone block.

[0025] FIG. 8 illustrates a conventional tap device being used to tap a hole between the tunnel wall and the bone block.

[0026] FIG. 9 illustrates the screw being inserted into the tibial tunnel between the tunnel wall and the bone block.

[0027] FIG. 10 is a side view of the knee after the ACL replacement procedure has been completed.

[0028] FIG. 11A is a histological section of a PLA/PGA bone pin containing β -tricalcium phosphate and surrounding tissue.

[0029] FIG. 11B is a histological section of a PLA bone pin and surrounding tissue.

[0030] FIG. 11C is a histological section of a PLA bone pin and surrounding tissue.

[0031] FIG. 11D is a histological section of a PLA bone pin containing β -tricalcium phosphate and surrounding tissue.

[0032] FIG. 11E is a histological section of a PLA/PGA bone pin containing β -tricalcium phosphate and surrounding tissue.

DETAILED DESCRIPTION OF THE INVENTION

[0033] The novel interference screws of the present invention are a composite of a biodegradable polymer or copolymer and a bioceramic. The term biodegradable as used herein is defined to mean materials that degrade in the body and then are either absorbed into or excreted from the body. The term bioceramic as defined herein is defined to mean ceramic and glass materials that are compatible with body tissue. The bioceramics are preferably biodegradable.

[0034] The biodegradable polymers that can be used to manufacture the composite screws used in the novel process of the present invention include biodegradable polymers selected from the group consisting of aliphatic polyesters, polyorthoesters, polyanhydrides, polycarbonates, polyurethanes, polyamides and polyalkylene oxides. Preferably, the biodegradable polymers are aliphatic polyester polymers and copolymers, and blends thereof. The aliphatic polyesters are typically synthesized in a ring opening polymerization. Suitable monomers include but are not limited to lactic acid, lactide (including L-, D-, meso and D,L mixtures), glycolic acid, glycolide, ϵ -caprolactone, p-dioxanone (1,4-dioxan-2-one), trimethylene carbonate (1,3-dioxan-2-one), δ -valerolactone, and combinations thereof. These monomers generally are polymerized in the presence of an organometallic catalyst and an initiator at elevated temperatures. The organometallic catalyst is preferably tin based, e.g., stannous octoate, and is present in the monomer mixture at a molar ratio of monomer to catalyst ranging from about 10,000/1 to about 100,000/1. The initiator is typically an alkanol (including diols and polyols), a glycol, a hydroxyacid, or an amine, and is present in the monomer mixture at a molar ratio of monomer to initiator ranging from about 100/1 to about 5000/1. The polymerization typically is carried out at a temperature range from about 80° C. to about 240° C., preferably from about 100° C. to about 220° C., until the desired molecular weight and viscosity are achieved. It is particularly preferred to use a copolymer of poly(lactic acid) and poly(glycolic acid). In particular, a copolymer of about 85 mole percent poly(lactic acid) and about 15 mole percent poly(glycolic acid).

[0035] The bioceramics that can be used in the composite screws used in the novel process of the present invention include ceramics comprising mono-, di-, tri-, α -tri-, β -tri-, and tetra-calcium phosphate, hydroxyapatite, calcium sulfates, calcium oxides, calcium carbonates, magnesium calcium phosphates. It is particularly preferred to use a β -tricalcium phosphate.

[0036] In addition to bioceramics, bioglasses may also be used in the composite screws. The bioglasses may include phosphate glasses and bioglasses.

[0037] The amount of the bioceramic or bioglass in the composite interference screw will be sufficient to effectively promote bone in-growth. Typically the amount will be about 2.0 Vol. % to about 25.0 Vol. %, and preferably about 15.0 Vol. %.

[0038] The composite, biodegradable interference screws useful in the present invention are manufactured in conventional extrusion and molding processes using conventional extruding and molding equipment. In a typical process, dry biodegradable polymer pellets and dry bioceramic or bioglass are metered into a conventional heated screw extruder. The materials are heated and blended in the extruder for a sufficiently effective residence time to provide a viscous composite having a uniform distribution of the particles of bioglass or bioceramic. Then the viscous composite is cooled and chopped to form pellets of the homogenous composite. The interference screws may be molded in a conventional injection molder. In a typical injection molder, pellets of composite are fed into a barrel, passed through a heating zone to melt the polymer, then pushed forward through a nozzle and into the cavity of a chilled mold. After cooling, the mold is opened, and the part is ejected.

[0039] A biodegradable interference screw 5 of the present invention is seen in FIGS. 1A-C. The screw 5 is seen to have an elongate body 10 having a cannulated passage 20 there-through, with proximal socket opening 22 and distal opening 26. The body 10 is seen to have a plurality of thread flights 30 extending from the outer surface 12. The body 10 is seen to have distal end 14 and proximal end 16. A driver 50 for inserting or emplacing the screw 5 in a bone tunnel is seen in FIG. 2. The driver 50 has an elongated rod member 60 having distal end 62 and proximal end 64. Distal end 62 is seen to have a driver 63 extending therefrom having a hexagonal configuration for mating with socket 22. The screw 5 is mounted to driver 50 by inserting the driver 63 of distal end 62 into the mating proximal socket end 22 of the passage 20.

[0040] The biodegradable composite interference screws described herein are used in the novel ACL reconstruction procedure of the present invention in the following manner as illustrated in FIGS. 3-10. Prior to reconstructing the ACL using a bone-tendon-bone graft, a patient is prepared for surgery in a conventional manner. The patient's knee 100 is prepared for surgery in a conventional manner including swabbing the skin around the knee with a conventional antiseptic solution, and draping the knee. The knee 100 is then angulated by the surgeon in a conventional manner to facilitate the surgical procedure. The patient is then anesthetized in a conventional manner using conventional anesthetics, either general or local at the discretion of the surgeon. As seen in FIG. 1, the knee 100 is seen to have a femur 150 having a distal end 160 and a tibia 130 having a

proximal end **140**. Proximal end **140** is seen to have a tibial plateau **141**. Extending from the distal end **160** of femur **150** are the femoral condyles **170** separated by notch **175**. For the sake of illustration, the tendons, cartilage, fascia, soft tissue and skin are not shown. The knee **100** is accessed by the surgeon using a conventional arthroscope that is inserted through a conventional cannula, that has been previously emplaced in the knee **100** in a conventional manner through an incision in the skin covering the knee **100**. A flow of sterile saline is initiated through channels in the arthroscope into the knee **100**. The stumps of the ACL are removed from the surfaces of the tibial plateau **141** and the chondryl notch **175** using conventional shavers that are inserted through the cannula. A bone-tendon-bone graft **200** is harvested and prepared by the surgeon in a conventional manner. The graft **200** is harvested by making an incision in the skin over the knee **100** down the anterior patella to the tibial. A conventional sagittal saw is then used to harvest the opposed bone plugs **220** that are connected by harvested patellar tendon segment **210**. The tendon segment **210** is cut from the patellar tendon in a conventional manner using a scalpel. If desired, a graft without bone blocks attached may also be used in the method of the present invention.

[0041] The procedure continues by mounting a conventional tibial drill guide (not shown) to the proximal end of the tibia **130**. A conventional guide pin **250** is inserted into the drill guide and mounted to a conventional surgical drill. The guide pin **250** is seen to have elongated body **252** having distal cutting end **254** and proximal end **255** with suture mounting opening **257**. The guide pin **250** is drilled into the front of the tibia **130** in a conventional manner until the distal end **254** exits out from the tibial plateau **141**. The drill guide is then removed from the tibia **130** and a conventional surgical reamer is placed over the guide pin **250** and turned to ream out a tibial tunnel **280** having a passage **282**, an inner tunnel wall **283**, a top opening **284** out of the tibial plateau **141** and a bottom opening **286** out through the tibia **130**. Then the reamer and the guide pin **250** are removed from the tibial tunnel **280** and a conventional femoral aimer device (not shown) is inserted into tibial tunnel **280** and manipulated until the distal end of the femoral aimer engages the appropriate location on the femoral notch **175**. Then the guide pin **250** is inserted through a passage in the femoral aimer, and the guide pin **250** is mounted to a conventional surgical drill and drilled into the femoral notch such that the distal end exits out through the lateral side of the femur **150** and through the skin overlying that section of the femur **150**. Next, the femoral aimer is removed from the knee **100** and a conventional surgical bone reamer is placed over the guide pin **250** and moved through the tibial tunnel **280**, and a femoral tunnel **290** is drilled through the femur having a passage **292**, an inner tunnel wall **293**, an upper opening **294** out through the lateral side of the femur **130** and a bottom opening **296** out of the femoral notch **175**. The reamer is then removed from the bone tunnel **290**.

[0042] Referring to FIG. 3, the graft **200** is illustrated proximal to the knee **100** having the tibial tunnel **280** and femoral tunnel **290** drilled and reamed in the tibia **130** and femur **150**, respectively. The guide pin **250** is seen to reside in the knee **100** with the elongated body **252** of guide pin **250** substantially contained within tibial tunnel **280** and femoral tunnel **290**, with distal end **254** exiting out through opening **294** and proximal end **255** exiting out from opening **286**. Next, the surgeon threads sutures **230** through the suture

tunnels **222** in bone blocks **220**. The suture through the top bone block **220** is also threaded through opening **257** of guide pin **250**. The surgeon then pulls guide pin **250** distally such that the graft **200** is displaced into the knee **100** with upper bone graft **220** located in passage **292** of femoral tunnel **290** and lower bone block **220** located in passage **282** of tibial tunnel **280**. An optional step of tapping the bone block and bony tunnel is illustrated in FIGS. 4 and 5. A guide wire **300** is seen to be inserted into femoral bone tunnel **290** between bone block **220** and inner tunnel wall **293**. Then, a conventional cannulated bone tap **310** is inserted over guide wire **300**. The bone tap **310** has elongated cannulated member **310**, having a transverse handle **314** mounted to proximal end **312** and a tapping/cutting end **318** mounted to distal end **316**. The tapping cutting end **318** is rotated by rotating handle **314**, causing an opening to be cut and threads to be tapped between inner wall **293** and bone block **220** in the femoral tunnel **290**. Then, as seen in FIG. 6, a biodegradable interference screw **5** mounted to a driver **50** is mounted to the guide wire **300** and threaded into the femoral tunnel **290** between the bone block **220** and the inner wall **293**, thereby securing the upper bone block **220** in the passage **292** of femoral tunnel **290**. The guide wire is then removed from the femoral tunnel **290** and inserted into opening **286** of and into passage **280** of tibial tunnel **280** between the lower bone block **220** and the inner wall **183** as seen in FIG. 7. Then, the surgeon tensions the graft **200** by pulling proximally on sutures **230** connected to lower bone block **220**. Then, the bone tap **310** is inserted into tibial tunnel **280** over the guide wire **300** and an opening and threads are cut and tapped between inner wall **283**, and bone block **220**. Finally, the bone tap **310** is removed and as seen in FIG. 9, a biodegradable interference screw **5** is mounted over the guide wire **300** and threaded into the tibial tunnel **280** between inner wall **282** and lower bone block **220**, thereby securing the lower bone block **220** in tibial tunnel **280**. This completes the ACL reconstruction, and the graft **200** is now secured in the knee **100**. The complete reconstructed knee **100** is seen in FIG. 10. The surgeon then checks the knee for proper flexion and completes the procedure in a conventional manner by removing the scope and portal, and conventionally closing and/or suturing and bandaging all incisions.

[0043] The following examples are illustrative of the principles and practice of the present invention although not limited thereto.

EXAMPLE 1

[0044] Biodegradable composite bone pins **1** were prepared in a conventional manner and into the femurs of mammalian laboratory animals. The pins were of the following three compositions: A) composites of 15/85% by volume β -tricalcium phosphate and (85/15)poly (lactide co-glycolide); B) poly(lactide); and C) composite of 15%/85% by volume β -tricalcium phosphate and poly(lactide). About 24 months after implantation, the animals were euthanized and histological sections were obtained. As seen in FIG. 11A, a bone pin **500** having a Composition (A) demonstrated a significant degree of absorption when compared with the original diameter indicated by arrows **505**, and significant tissue (bone) in-growth. In addition, minimal tissue reaction was observed. As seen in FIGS. 11B and 11C, bone pins **510** and **520** having Composition (B) exhibited minimal absorption compared with the original diameters

indicated by arrows **515** and **525**, respectively. As seen in FIG. **11D**, a bone pin **530** having Composition C showed minimal absorption compared with the original diameter indicated by arrows **535**. And, as seen in FIG. **11E**, a bone pin **540** having Composition A demonstrated a significant degree of absorption compared with the original diameter indicated by arrows **545**, and significant tissue (bone) in-growth. Minimal tissue reaction was observed.

[0045] The novel ACL graft replacement method of the present invention using a composite interference screw made from a bioabsorbable polymer and a bioceramic or bioglass has many advantages. The advantages include having improved bioabsorption and bone replacement, improved tissue in-growth, and minimizing tissue trauma. In addition, there is an optimal balance between stiffness and elasticity of the screws.

[0046] Although this invention has been shown and described with respect to detailed embodiments thereof, it will be understood by those skilled in the art that various changes in form and detail thereof may be made without departing from the spirit and scope of the claimed invention.

We claim:

1. A method of replacing an anterior cruciate ligament in a knee, comprising:

- providing a graft having a first end and a second end;
- drilling a bone tunnel in a tibia, said bone tunnel having an inner wall;
- drilling a bone tunnel in a femur, said bone tunnel having an inner wall;
- mounting the first end of the graft in the femoral bone tunnel;
- mounting the second end of the graft in the tibial bone tunnel;
- providing a biodegradable, composite interference screw, said interference screw comprising:
 - a biodegradable comprising a copolymer of poly (lactic acid) and poly(glycolic acid); and,
 - a bioceramic;
- inserting the biodegradable screw into the femoral bone tunnel between an interior surface of the femoral bone tunnel and the first end of the graft; and,

rotating the interference screw such that the screw is substantially contained within the femoral bone tunnel, and the first end of the graft is fixed in place between the interference screw and a section of the interior surface of the femoral bone tunnel.

2. The method of claim 1, additionally comprising the steps of:

inserting the second end of the graft into the tibial tunnel;

inserting the biodegradable screw into the tibial bone tunnel between an interior surface of the tibial bone tunnel and the second end of the graft; and,

rotating the interference screw such that the screw is substantially contained within the tibial bone tunnel, and the second end of the graft is fixed in place between the interference screw and a section of the interior surface of the tibial bone tunnel.

3. The method of claim 1, wherein the bioceramic comprises a bioceramic selected from the group consisting of mono-, di-, tri, α -tri, β -tri and tetra-calcium phosphate, hydroxyapatite, calcium sulfates, calcium oxides, calcium carbonate, and magnesium calcium phosphates.

4. The method of claim 4 wherein the bioceramic comprises β -tricalcium phosphate.

5. The method of claim 1 wherein the bioabsorbable polymer comprises a copolymer of polylactic acid and poly (glycolic acid) comprising about 85 mole percent to about 95 mole percent of poly (lactic acid) and about 5 mole percent to about 15 mole percent of poly (glycolic acid).

6. The method of claim 5 wherein the bioabsorbable polymer comprises a co-polymer of about 85 mole percent poly (lactic acid) and about 15 mole percent poly (glycolic acid).

7. The method of claim 1 wherein the composite screw comprises about 2.0 Volume percent to about 25.0 Volume percent of bioceramic.

8. The method of claim 1, wherein the composite screw comprises about 15.0 Volume percent of bioceramic.

9. The method of claim 1, wherein the graft has a bone block attached to one end.

10. The method of claim 1, wherein each end of the graft has a bone block attached thereto.

11. The method of claim 1 comprising the additional step of tapping the inner surface of the bone tunnels and the bone blocks to create a threaded space therebetween.

* * * * *